

# Inner West Community Plan

December 2016

[www.innerwest.org.au](http://www.innerwest.org.au)



# Acknowledgments

This plan was developed following a two-day workshop in December 2015 with members of the Inner West Initiative. The Community Centres SA Results Based Accountability team facilitated this workshop and prepared the population plan in partnership with the Inner West Initiative Steering Group.

**The Inner West Community Plan** has been developed by the Inner West Initiative Committee and Steering Group with the input of a large number of stakeholders. It represents the compilation of the ideas, suggestions and observations of community members, service providers, educators and others expressed over the period February 2015 until December 2016.

We acknowledge the DECD Community Partnership Planning team as integral to the initial planning and community forums.

The financial and in kind contributions of the following organisations have contributed enormously to the development of this plan and are greatly appreciated:

- DECD Inner West Partnership
- UnitingCare Wesley Bowden
- Schools Ministry Group
- UnitingCare Wesley Port Adelaide - Communities for Children
- Together SA

We acknowledge the support and partnership of Community Centres SA in facilitating a two-day workshop with members of the Steering Group which ultimately led to the development of this final population level plan.

Together SA provides support to this initiative in a number of ways and this support is greatly appreciated.

We acknowledge UnitingCare Wesley Port Adelaide - Communities for Children and the Department for Education and Child Development (DECD) who are enabling the genuine voice of children and young people across the Inner West to be collected, and for it to have a direct influence on the ongoing development of this plan and its strategies.

The members of the Inner West Steering Group are to be acknowledged for their commitment to this initiative, their passion for the children and young people of the Inner West and for the many hours of time they have contributed to the development of this plan.

Importantly, a huge acknowledgment must go to those residents, parents, business owners and community leaders who have in some way influenced the development of this plan.



# Executive Summary

**Community is critical to this work.** Community can be defined as a group of people living together and practising common ownership; in other words, a group of people who take collective responsibility for the everyday happenings and life conditions of the community. Community can also be defined as the condition of sharing or having certain attitudes and interests in common. Again, whatever the definition, community is critical to the success of this work.

It is fair to say that no matter which community you enter or walk alongside, they all want the best for their children, young people, and families. They want people to flourish or to thrive.

The Inner West of Adelaide is no different. There are many people, adult and children alike, who have great potential to make a difference in this world. The gathered data tells us though, that many people in our Inner West Community are struggling. Approximately 25% or 1 in 4 children are starting school vulnerable on one or more domains of the Australian Early Development Census (AEDC). This is just the tip of the iceberg. **If we want to see our result realised as a community, then all members of the community must find new ways of achieving change together.**

Enter Results Based Accountability and Collective Impact. Results Based Accountability is a population (whole of community) and performance (individual strategy) measurement tool. It lays out a common language, which makes measurement across strategies with multiple partners possible. **Collective Impact is a framework that incites community with permission to change.** It is more than a new program. It is about systems change driven by community, nurturing interdependence, and encouraging innovation to create a community

that allows families to thrive. The Inner West Initiative will seek to work with both of these tools, but acknowledge that they are just tools, and that the community has much experience and knowledge to contribute.

This Community Plan was derived from a two-day planning workshop held in December 2015 with members of the leadership of the Inner West Initiative. The workshop was facilitated by Community Centres SA Results Based Accountability team, whose skills and experience were evident and greatly appreciated by those in attendance.

**Children and young people, 0-18 years old thrive in the Inner West.** This is our desired population level result. Thrive is defined as children and young people reaching their full physical, intellectual, social, emotional and spiritual potential. It is children and young people who are resilient and supported by systems and environments that nurture interdependence. This plan identifies Aboriginal and Torres Strait Islanders, refugees and migrants, families with special needs, and low income families as priority groups.

The purpose of the plan is to guide the ongoing development and work of the Inner West Initiative, to provide clear pathways for measurement, and to provide a clear communicable desired result shared by all members of the Inner West Community. **It is a living document and will adapt and change as appropriate.**

We look forward to your support as a community, and welcome your input and direction at any point along our journey together.

## The Inner West Steering Group

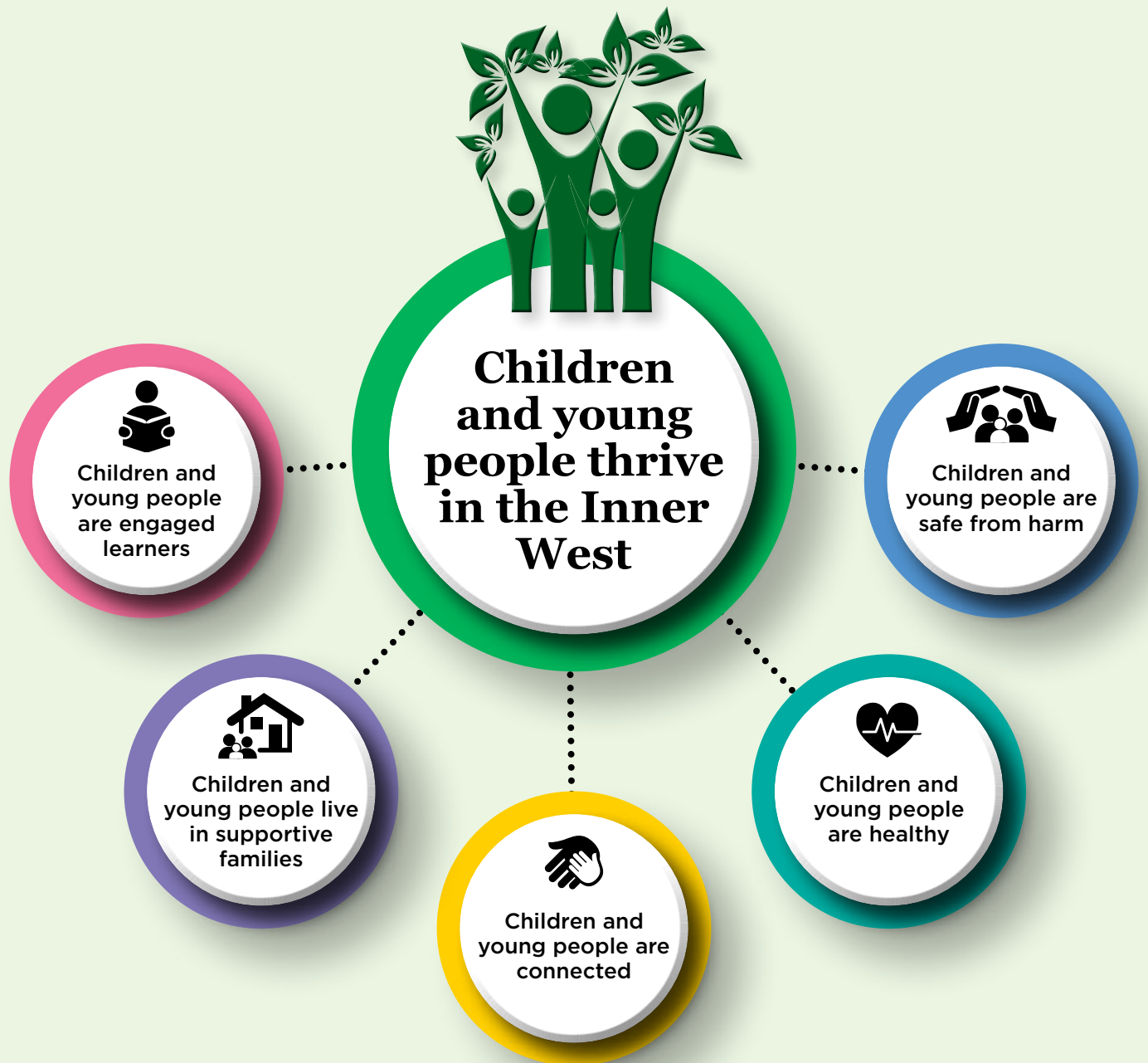


**25%**

or 1 in 4 children  
are starting school  
vulnerable



# Children and young people 0-18 years old thrive in the Inner West



## Thrive






Children and young people reach their full physical, intellectual, social, emotional and spiritual potential.

Children and young people are resilient and supported by systems and environments that nurture interdependence.

# Community plan summary

**Result:** Children and young people thrive in the Inner West

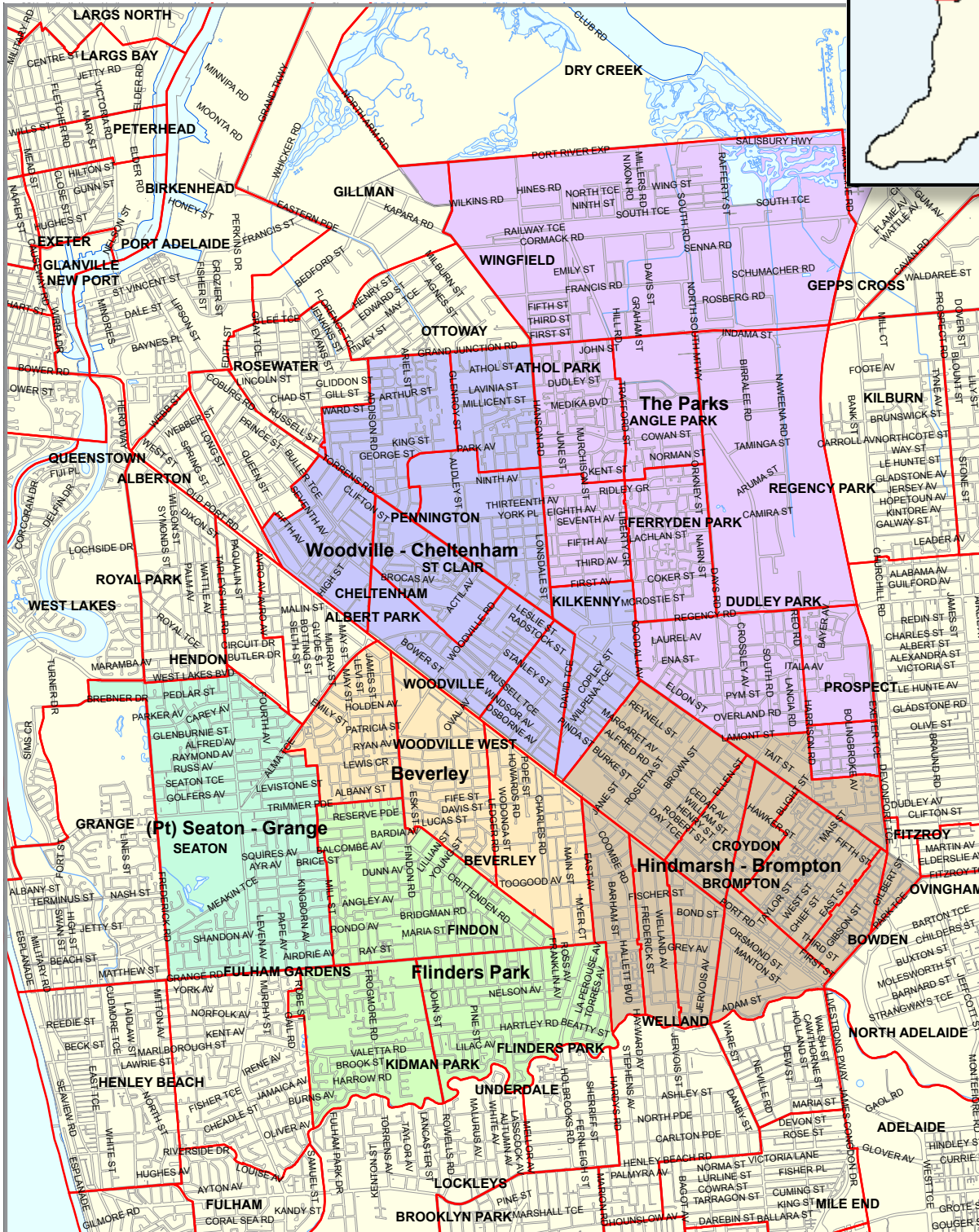
**Population:** Children and young people 0-18 years old living in the Inner West suburbs of Adelaide

Result Areas	Experience	Primary indicators	Secondary indicators
 <p><b>Children and young people are safe from harm</b></p>	<p>Environments and people provide protective boundaries for children and young people in the community</p> <p>Children and young people express themselves and have the ability to influence and shape their environments</p> <p>Children and young people are free to be themselves</p>	<p>Number of child protection notifications of concern (DCP)</p> <p>Number of children in out-of-home care (DCP)</p>	<p>Crime Rate</p> <p>Young offending rates</p> <p>Domestic violence rate</p>
 <p><b>Children and young people are healthy</b></p>	<p>Children and young people enjoy the optimal balance of the right food, sleep, and physical activity</p> <p>Children and young are fit and able to take on the day</p> <p>Children and young are at their best emotionally, spiritually and intellectually</p> <p>Children and young people are nurtured</p>	<p>Number and percent of children developmentally vulnerable or at risk in AEDC</p> <p>Number and percent of young people self-reporting as thriving in the MDI</p>	
 <p><b>Children and young people are connected</b></p>	<p>Children and young people feel welcomed and that they belong</p> <p>Children and young feel that they have a voice, have a sense of pride and trusting relationships</p> <p>Children, young people and their families know about and access appropriate services</p> <p>The community is inclusive of all</p> <p>The community has places for children and young people to connect with each other</p>	<p>Number and percent of children developmentally vulnerable or at risk in the AEDC Social Competence and Communications domains</p> <p>Number and percent of young people self-reporting connectedness in the MDI</p>	
 <p><b>Children and young people live in supportive families</b></p>	<p>Families encourage the personal development of children and young people and nurture their full potential</p> <p>Families access education, sports, clubs, play groups and services</p> <p>Families promote the value of community, its networks of opportunities and assistance</p>	<p>Percent of parents forming secure attachments with their children*</p> <p>Number and percent of children developmentally vulnerable or at risk in AEDC Emotional Maturity, Social Competence, and Physical Health and Wellbeing Domains</p>	<p>Percent of children enrolled in and attending a quality preschool program</p>
 <p><b>Children and young people are engaged learners</b></p>	<p>Children and young people achieve academically</p> <p>Children and young actively participating in learning</p> <p>Children and young have a passion for and appreciation of learning and have a growth mindset</p>	<p>Percent of children and young people achieving DECD Standard of Educational Achievement</p> <p>Number of young people not engaged in employment or education/training</p>	<p>Percent of school children experiencing habitual unexplained non-attendance (five days or more) per term</p>

\*The Inner West recognises this indicator does not yet exist, but is critical to the long term ability of the initiative to turn the curve for vulnerable families as early as possible



# Adelaide Inner West map



- |  |   |  |   |
|--|---|--|---|
| <ul style="list-style-type: none"> <li><b>The Parks</b></li> <li>• Angle Park</li> <li>• Croydon Park</li> <li>• Devon Park</li> <li>• Dudley Park</li> <li>• Ferryden Park</li> <li>• Mansfield Park</li> <li>• Regency Park</li> <li>• Wingfield</li> <li>• Woodville Gardens</li> </ul> | <ul style="list-style-type: none"> <li><b>Woodville - Cheltenham</b></li> <li>• Athol Park</li> <li>• Cheltenham</li> <li>• Kilkenny</li> <li>• Pennington</li> <li>• St Clair</li> <li>• Woodville</li> <li>• Woodville North</li> <li>• Woodville Park</li> </ul> | <ul style="list-style-type: none"> <li><b>Hindmarsh - Brompton</b></li> <li>• Allenby Gardens</li> <li>• Bowden</li> <li>• Brompton</li> <li>• Croydon</li> <li>• Hindmarsh</li> <li>• Ridleyton</li> <li>• Renown Park</li> <li>• West Croydon</li> <li>• West Hindmarsh</li> </ul> | <ul style="list-style-type: none"> <li><b>Flinders Park</b></li> <li>• Findon</li> <li>• Flinders Park</li> <li>• Kidman Park</li> </ul> <ul style="list-style-type: none"> <li><b>Seaton - Grange (Part)</b></li> <li>• Seaton</li> </ul> <ul style="list-style-type: none"> <li><b>Beverly</b></li> <li>• Woodville West</li> <li>• Woodville South</li> <li>• Beverly</li> </ul> |
|--|---|--|---|
- Suburb boundary**

# Evidence Base

There are a number of fundamentals that are guiding the work that we are doing and to which we are strongly committed.

## **Results Based Accountability**

Our work is being guided by the use of the Results Based Accountability Population Accountability model. Results Based Accountability™ (RBA) is a common-sense approach to planning positive, measurable outcomes for our communities. It drives disciplined continuous-improvement, keeping us accountable and focused on results. RBA™ is a unique methodology which uses ends-to-means thinking to define outcomes and drive decision-making. It was designed by Mark Friedman and published in his book, *Trying Hard Is Not Good Enough*, RBA™.

## **Collective Impact**

We recognise the power of collaborative efforts and also strongly embrace the Collective Impact framework and the 5 conditions that need to be met within this framework (common agenda, shared measurement, mutually reinforcing activities, continuous communication and backbone support). Through Collective Impact, resources, actions and outcomes are shared, thereby reducing duplication and siloing and increasing effectiveness.

## **The Importance of Early Childhood**

There is overwhelming evidence that from pre-birth through the first three years of life, the physical and brain development and the social foundations that are essential factors for life success are created. Establishing these competencies in the early years is essential for success in later life.

## **Prevention and Early Intervention**

We have an appreciation of the importance of prevention and early intervention approaches. There is strong evidence that multi-pronged prevention strategies that strengthen protective factors and reduce the impact of risk factors have a positive influence on the child's life trajectory including into adulthood.

## **Community Ownership and Voice**

We believe that the effectiveness of the work requires authentic engagement of community members, parents, children and service providers in co-design and leadership.

We know that local people are the experts of their own experience and we want to access the local assets, relationships, data and wisdom to contribute to making change for the children and young people of the region. We welcome the leadership and contribution of community members.

The Inner West Initiative will work with the Department for Education and Child Development (DECD) and UnitingCare Wesley Port Adelaide Communities for Children as close partners to gather ongoing genuine and meaningful voice from children and young people that will lead and guide the development of action strategies to reach our result.

We will also seek to gain genuine voice of adults within the community.

## **The Ecological Model**

We recognise the importance of Bronfenbrenner's ecological model of child development and the influences on the child of the family environment, the wider community and social environments. This will be recognised in the work undertaken within this initiative.

